



**Latin America Focused Gold Mining And Exploration  
Full Year Results Presentation**

August 2011



# Cautionary Statement

OROSUR MINING



This presentation contains certain information that constitutes forward-looking statements including the proposed acquisition of the Talca property, the completion of the proposed financing, future operating performance of Orosur Mining Inc. (the "Company" or "OMI"), realization of mineral resource estimates, results, timing and cost of future exploration, development and production, expansion of San Gregorio life of mine, development of an underground mine and production at Arenal Deepes, and development of Pantanillo. Forward-looking statements are frequently characterized by words such as "plan," "expect," "intend," "believe," "anticipate" and other similar words, or statements that certain events or conditions "may" or "will" occur. Forward-looking statements are based on the opinions and estimates of management at the date the statements are made, and are subject to a variety of risks and uncertainties and other factors that could cause actual events or results to differ materially from those projected in the forward-looking statements. These factors include entering into definitive documentation with the vendor of the Talca property, approval of the vendor's shareholders, the actual results of current exploration and development activities, project delays, funding needs, future price of metals, conclusions of economic evaluations and other inherent risks involved in the exploration and development of mineral properties described in the Company's most recent annual information form under the heading "Risk Factors" which has been filed electronically by means of the Canadian Securities Administrators' website located at [www.sedar.com](http://www.sedar.com). The Company disclaims any obligation to update or revise any forward-looking statements if circumstances or management's estimates or opinions should change unless where required by law. The reader is cautioned not to place undue reliance on forward-looking statements.

This publication is a brief summary and does not purport to contain all available information on the subjects covered. Further information may be available on request. This publication may not be reproduced for further publication unless the source is quoted.

This publication is for informational purposes only and shall not be construed as an offer or solicitation for the subscription or purchase or sale of any securities, or as an invitation, inducement or intermediation for the sale, subscription or purchase of securities, or for engaging in any other transaction.

This publication is not directed at private individuals and has not been approved by an authorised person for the purposes of section 21 of the Financial Services and Markets Act 2000, as amended. Within the United Kingdom, it is directed only at persons falling within Article 19 (Investment Professionals), Article 49 (High Net Worth Companies) or Article 50 (Sophisticated Investors) of the Financial Services and Markets Act 2000 (Financial Promotions) Order 2005. Any other person or persons who receive a copy of this presentation should not act upon it and Canaccord accepts no liability or responsibility whatsoever for any actions taken by such persons in reliance on this publication.

The distribution of this publication in jurisdictions other than the UK may be restricted by law and, therefore, persons into whose possession this publication comes should inform themselves about and observe any such restrictions. Any failure to comply with such restrictions may constitute a violation of the securities laws of any such jurisdictions. In particular, this document should not be forwarded or transmitted in or into the United States, Canada, Australia, South Africa or Japan.

## **Qualified Person's Statement**

The technical information presented in this presentation has been reviewed and verified by Mr. Randall Corbett, general manager, San Gregorio, and is considered to be in compliance with NI 43-101 reporting guidelines. Mr. Corbett has a Bachelor of Engineering (Mining) Degree from Technical University of Nova Scotia (T.U.N.S.), is a Professional Engineer (P. Eng.) registered in the Province of Ontario and has more than 25 years operational, engineering and development experience. OMI discloses the following update of its Mineral Resources and Mineral Reserves as at 1 June 2010. All open pit resources and reserves are quoted at a cut off of 0.5 g/t Au, except for Sobresaliente where 0.7 g/t Au has been used. The underground resources for Arenal Deepes are quoted at a cut-off of 1.5 g/t Au. The underground reserves for Arenal Deepes are quoted at a cut-off of 1.59 g/t Au. All Reserves have factors for dilution and mining recovery applied. All reserves and resources referred to in this presentation are as disclosed in the Company's most recent Annual Information Form for the year ended May 31, 2010 (29 Nov 2010). Mineral resources are inclusive of total mineral reserves.

## **Non-GAAP Financial Measures**

This presentation contains terms such as cash cost per ounce or EBITDA, (Earnings Before Interest, Income Taxes, Depreciation and Amortization), which are financial measures used by many investors to compare companies on the basis of operating results, asset value and the ability to incur and service debt. EBITDA is used because OMI's net income alone does not give an accurate picture of its' cash-generating potential. Management believes that EBITDA is an important measure in evaluating performance and in determining whether to invest in OMI. However, EBITDA is not a recognized earnings measure under Canadian generally-accepted accounting principles ("GAAP") and does not have a standardized meaning prescribed by GAAP. It is not intended to represent cash flow or results of operations in accordance with GAAP. Therefore, EBITDA may not be comparable to similar measures presented by other issuers. Investors are cautioned that EBITDA should not be construed as an alternative to net income or loss determined in accordance with GAAP as an indicator of OMI's performance or to cash flows from operating, investing and financing activities of liquidity and cash flows. For a reconciliation of net income determined in accordance with GAAP to EBITDA, see the table on page 17 of Management's Discussion and Analysis for the three months ended April 14, 2011 available under OMI's profile on [www.sedar.com](http://www.sedar.com).



- Production of 55,817 ounces for the year, in line with expectations
- Total cash cost for year \$US 754, in line with Quarter 3 update and well below original target of \$US 825
- Arenal development of 417 meters, in line with expectation.
- Target production Q1 2012 12,000 to 12,500 ounces
- Target production 2012 57,500 to 60,000 ounces
- Target operating cash cost for 2012 \$US 810 per ounce, total cash cost including royalty \$US 875 per ounce.
  - Increased gold price used in cutoff - additional margin at current prices



Financial Results		Full Year Ended May 31	
		2011	2010
Revenue	US\$ '000s	78,734	59,613
Net income for the period	US\$ '000s	15,946	1,401
Cash flow from operations	US\$ '000s	29,745	9,021
Cash at the end of the period	US\$ '000s	14,178	8,691
Total Debt at the end of the period	US\$ '000s	negligible	negligible

- Realised gold price was \$US 1,347 v \$US 1,065 for the prior year.
- Significant increase in profit and cashflow generation relative to market capitalisation
- Improved cash position and no debt after investing \$10 m in Arenal Deepes
- Significant capex in 2012 of \$31 m can be covered by working capital from operations and HSBC facility.
- Equity raising of \$13 m in June for Talca acquisition and further growth

# Asset Overview



## Chile

### Anillo – pre resource stage

- Drilling completed August 2011, awaiting results

### Pantaniillo – resource stage

- Scoping Study underway
- 1.05Moz M&I resource

### Talca – pre resource stage

- New acquisition
- Maiden resource expected calendar Q2 2012
- Aim to aggressively advance through exploration



## Uruguay

### San Gregorio – Producing 55Koz p.a.

- 849 Koz M&I Resource
- Arenal Deeps in development – first production by Calendar Q4 2011
- Sobresaliente resource defined, additional targets for resource expansion in 2012

### Isla Cristalina – Optioned to Gladiator

- Gladiator option to earn up to 80%
- Has earned into 20% to date
- Iron, manganese and base metals

### Vaca Muerta – pre resource stage

- 43-101 resource update expected Calendar Q4 2012

### Texas & Rocha – pre resource stage

- 2,000m 1<sup>st</sup> pass drilling planned for each project

### Multiple Assets – Optioned to UMG

- Option to earn up to 80%
- Gold and base metals exploration
- Old Texas, Arroyo Polanco, Casupá-Madre, Mal Abrigo-Cerros Negros and María Albina

### Chamizo – Optioned to Minerales Cala

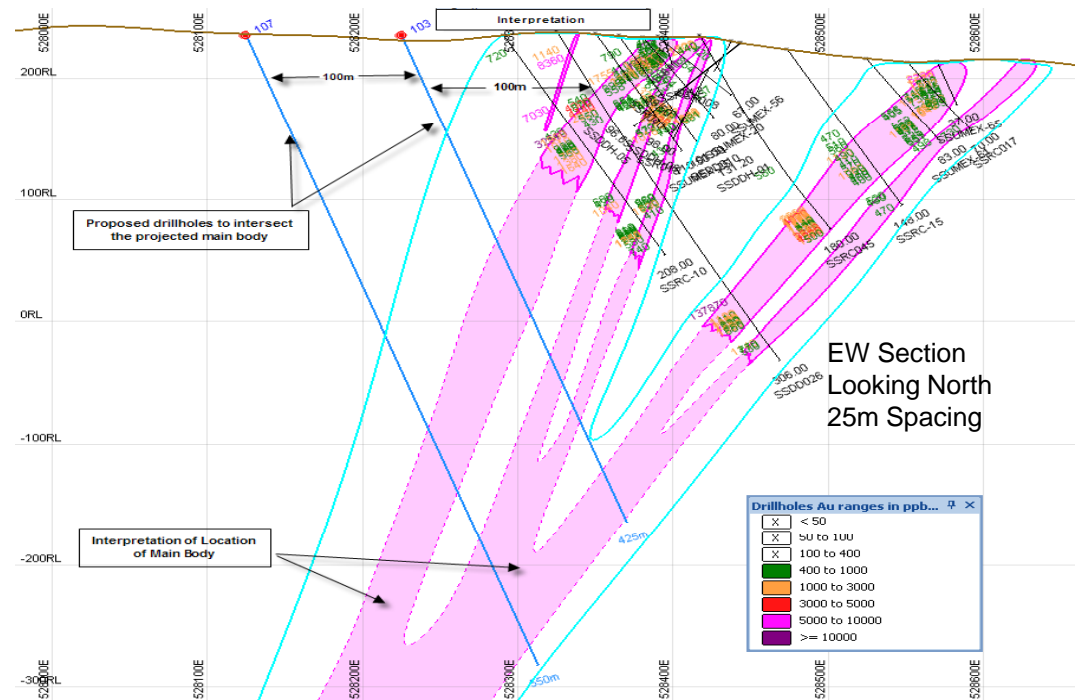
- Option to earn up to 80%
- Gold exploration

### Crucera – pre resource stage

- 43-101 resource completed

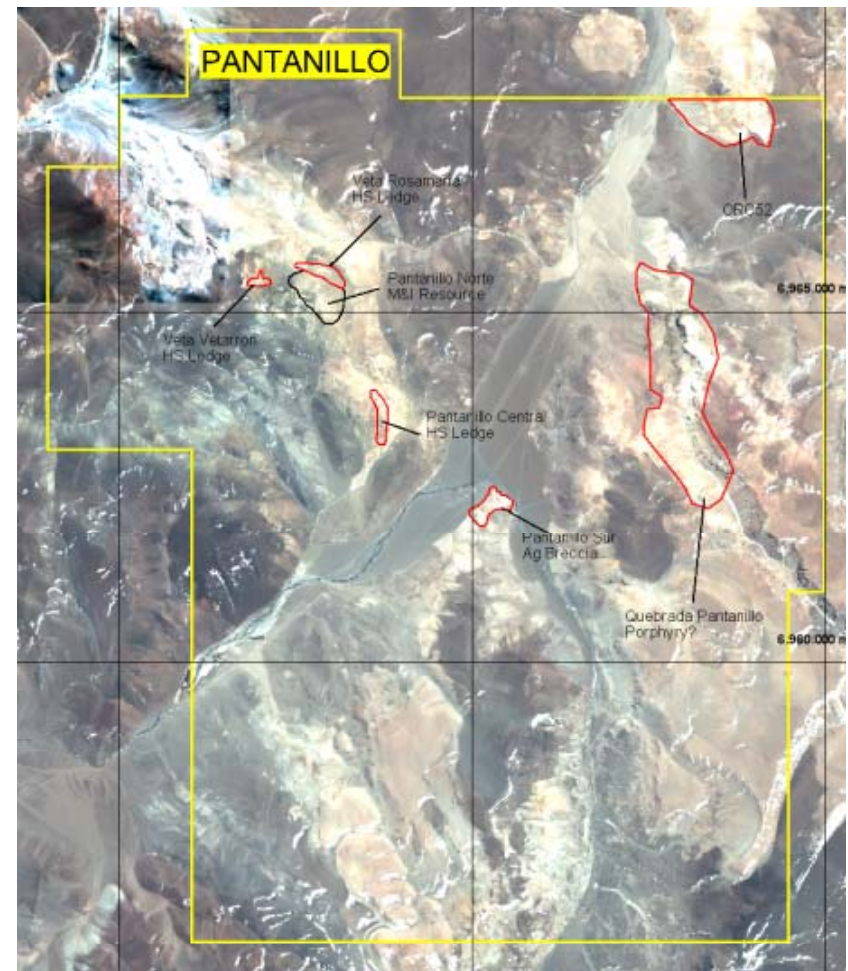


- Sobre Saliente M&I resource of 2,097,000 tonnes at 1.05 g/t for 71,000 ounces defined.
- Cruzera M&I resource of 437,000 tonnes at 4.05 g/t for 31,000 ounces defined.
- San Gregorio has 5 year mine plan at 50,000 to 60,000 ounces per annum.
- Vaca Muerta resource to be defined in H1 2012 with more infill drilling in Q1 2012.
- 2012 focus on San Gregorio and Argentinita underground, Texas, Rocha and Mahoma.





- 3,071 meters completed during 2011 campaign on infill and oxide targets close to resource.
- Infill holes confirmed resource. Mineralisation encountered on oxide targets but will not significantly increase resource.
- 2012 drilling on Quebrada Pantanillo, Oro 52 and Pantanillo Central.
- Bottle roll tests showed average recoveries for oxide and mixed of 68%. Little variation on crush size.
- Column tests on 1 inch crush size commenced. Potential to develop a ROM dump leach with lower capex and opex.

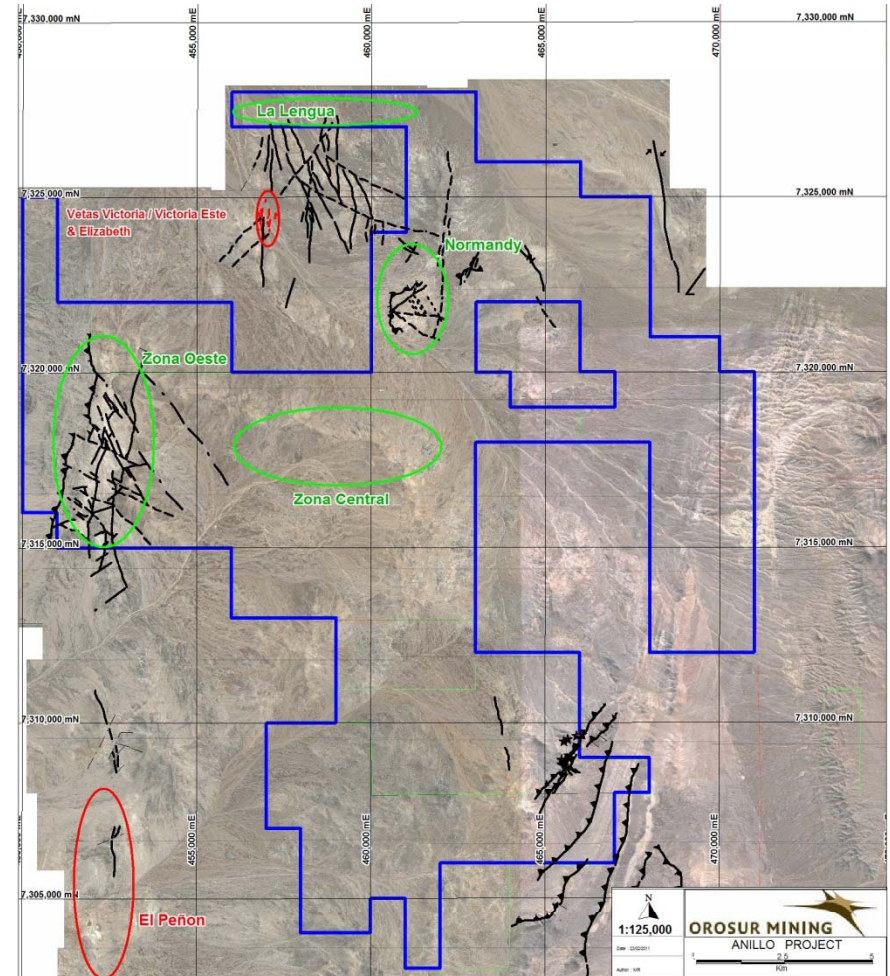


# Anillo – Pre Resource Exploration

OROSUR MINING



- 2,497 m first pass drilling completed during April 2011
- Anomalous Au/Ag values intercepted over several meters in holes drilled in two different sectors located to the north and east of Yamana's neighbouring Pampa Victoria discovery
- Second drill campaign of 9 holes for 4,500 meters to test for mineralised N/S oriented structures was completed in July/August 2011.
- Assays to be received during August/September 2011



# Talca – A Strategic Acquisition

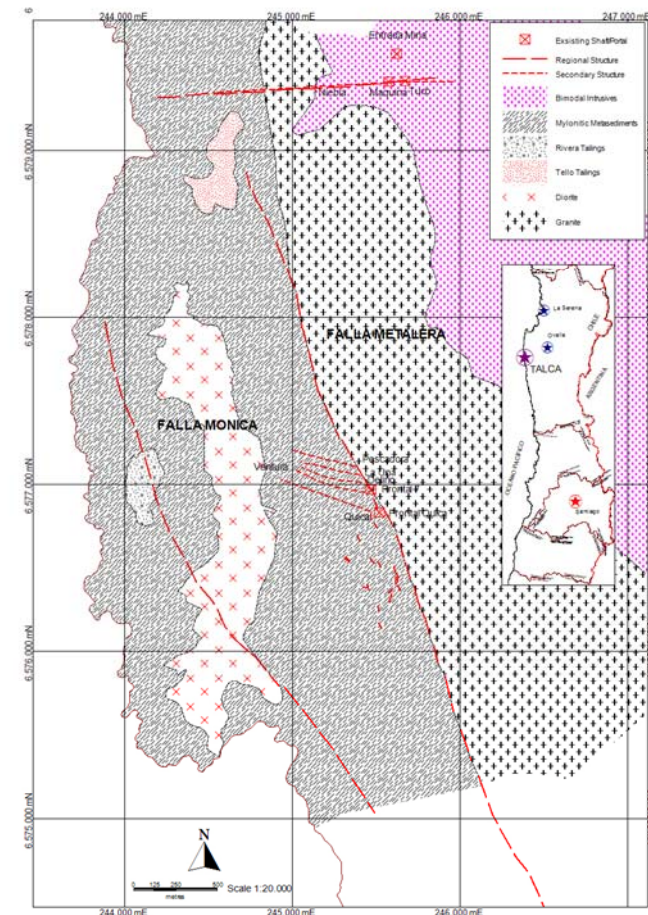
OROSUR MINING



## Talca Overview

- Located 375km North of Santiago in the Region IV of Northern Chile, covering an area of 2,000 hectares
- Mine in operation for 40 years – operated by a well known local family of artisanal miners
- Has produced an estimated 300,000 oz of gold from a system of 7 high grade veins
- Historical average head grade back-calculated at approximately 13 g/t Au
- Grades between 10-20g/t Au have been reported and visible gold is common
- Known quartz veins, widths from 0.3 to 4 meters, 100-250 meters deep, totaling a length of about 8.2km
- Veins open to strike and depth.
- Close to water and energy sources
- Easy access to site and no weather restrictions

## Project Geology



# Talca Acquisition & Exploration Plan

**OROSUR MINING**



## Acquisition Rationale

- ✓ Well known high grade gold mineralisation
- ✓ Significant production history
- ✓ Near mine and district exploration upside
- ✓ Local skilled work force and infrastructure
- ✓ Stable and well known mining jurisdiction
- ✓ Deliver initial resource within 12 months
- ✓ Potential to fast-track production
- ✓ Inline with our South American gold growth focus

## Acquisition Terms

Price	Action	Timing
US\$3.85M	Purchase 25% of asset	Over 18 month period
US\$3.8M	Purchase remaining 75%	Over 24 months following feasibility study
1% NSR	Net smelter royalty to Vendors	

## Exploration Programme

Activities	Calendar Timing
Mine topography, geologic mapping and sampling	Q3 2011
480km linear ground magnetics survey	Q3 2011
Surface mapping and geochemical sampling	Q3 2011
First pass exploration drill campaign of ±7,500m	Q4 2011
Metallurgical test work in parallel with exploration	Q4 2011
Commence environmental base line data collection	Q4 2011
<b>Maiden NI 43 101 compliant resources</b>	<b>Q2 2012</b>
Commence Scoping Study	Q2 2012
<b>Feasibility Study completed</b>	<b>2013</b>
Mine development and plant construction	2013
<b>Commence production</b>	<b>2014</b>



- ✓ **Achieved production and cash cost target**
- ✓ **5 year mine life at 50,000 to 60,000 ounces with significant potential to extend San Gregorio LOM**
- ✓ **EBITDA of US\$ 24 M for 2011 financial year**
- ✓ **Solid financial position, current cash with no debt**
- ✓ **Growth focus – Talca adds high grade potential production asset in Chile**
- ✓ **Significantly undervalued versus listed peers**

# Resources

OROSUR MINING



Deposit	QP	cut off (g/t Au)	Measured Resources			Indicated Resources			Total Measured and Indicated			Inferred Resources		
			Tonnes (000's)	Grade (g/t Au)	Contained Ounces	Tonnes (000's)	Grade (g/t Au)	Contained Ounces	Tonnes (000's)	Grade (g/t Au)	Contained Ounces	Tonnes (000's)	Grade (g/t Au)	Contained Ounces
<b>Underground Resources</b>														
Arenal Deeps	MDA	1.5	846	3.52	96,000	1,297	3.68	153,000	2,143	3.61	249,000	63	3.77	8,000
<b>Total</b>			<b>846</b>	<b>3.52</b>	<b>96,000</b>	<b>1,297</b>	<b>0.00</b>	<b>153,000</b>	<b>2,143</b>	<b>0.00</b>	<b>249,000</b>	<b>63</b>	<b>0.00</b>	<b>8,000</b>
<b>Open Pit Resources</b>														
San Gregorio	Golder	0.5	511	1.08	18,000	8,009	1.02	263,000	8,520	1.02	281,000	3	0.95	100
Santa Teresa	Devin den Boer	0.4	458	0.75	11,000	1,412	0.75	34,400	1,870	0.75	45,400	322	0.69	7,090
Ombú	MDA	0.5				409	0.99	13,000	409	0.99	13,000	29	0.93	1,000
Veta A	MDA	0.5				428	2.00	27,000	428	2.00	27,000	38	1.40	2,000
Veta Sur	Devin den Boer	0.4	36	1.63	1,880	131	1.43	6,000	167	1.47	7,880	77	1.54	3,790
Zapucay			-	-	-	-	-	-	-	-	-	-	-	-
Zapucay - Knob Hill	Devin den Boer	0.5	56.6	1.48	2,690	349	1.41	15,800	405.6	1.42	18,490	24	1.23	950
Argentinita	Devin den Boer	0.5				1,670	1.44	77,780	1,670	1.44	77,780	257	1.13	9,364
Sobresaliente	MDA	0.5				2,097	1.05	71,000	2,097	1.05	71,000	408	0.91	12,000
Picaflor	Devin den Boer	0.4				60	2.11	4,090	60	2.11	4,090	78	1.98	4,970
Crucera	MDA	2.0				237	4.05	31,000	237	4.05	31,000	74	3.25	8,000
Stockpiles - High						-	-	-	-	-	-	-	-	-
Stockpiles - Medium						303	0.93	9,060	303	0.93	9,060			
Stockpiles - Low						723	0.64	14,877	723	0.64	14,877			
<b>Total</b>			<b>1,062</b>	<b>0.00</b>	<b>33,570</b>	<b>15,828</b>	<b>1.11</b>	<b>567,007</b>	<b>16,890</b>	<b>1.11</b>	<b>600,577</b>	<b>1,309</b>	<b>1.17</b>	<b>49,264</b>
<b>Pantanillo</b>														
<b>Open Pit Resources</b>														
Pantanillo Norte	AMEC	0.3-0.5	36,565	0.71	834,924	10,528	0.63	214,148	47,093	0.69	1,049,071	304	0.53	5,166
<b>Total</b>		0.3-0.5	<b>36,565</b>	<b>0.71</b>	<b>834,924</b>	<b>10,528</b>	<b>0.63</b>	<b>214,148</b>	<b>47,093</b>	<b>0.69</b>	<b>1,049,071</b>	<b>304</b>	<b>0.53</b>	<b>5,166</b>

# Reserves

**OROSUR MINING**



Deposit	QP	Notes	cut off	Proven Reserves			Probable Reserves			Total Proven and Probable		
				Tonnes	Grade	Contained	Tonnes	Grade	Contained	Tonnes	Grade	Contained
			(g/t Au)	(000's)	(g/t Au)	Ounces	(000's)	(g/t Au)	Ounces	(000's)	(g/t Au)	Ounces
<b><u>Underground Reserves</u></b>												
Arenal Deepes	AMEC		1.5				1,568	2.87	145,000	1,568	2.87	145,000
<b><u>Open Pit Reserves</u></b>												
San Gregorio	OMI		0.5	136	1.19	5,000	1,846	1.15	68,000	1,985	1.15	73,000
Santa Teresa	OMI		0.4	199	0.81	5,182	550	0.81	14,323	749	0.81	19,506
Veta Sur	OMI		0.4	25	1.55	1,244	28	2.16	1,945	53	1.87	3,189
Zapucay - Knob Hill	OMI		0.5	47	1.33	2,027	250	1.31	10,535	298	1.31	12,562
Argentinita	OMI		0.5				317	1.43	14,542	317	1.43	14,542
Sobresaliente	MDA		0.46				652	1.11	23,300	652	1.11	23,300
Picaflor	OMI	1	0.4				30	2.35	2,294	30	2.35	2,294
Crucera	OMI		2.3				148	4.64	22,000	148	4.64	22,000
Stockpiles - High							-	-	-	-	-	-
Stockpiles - Medium							303	0.93	9,060	303	0.93	9,060
Stockpiles - Low							723	0.64	14,877	723	0.64	14,877
<b>Total</b>				<b>407</b>	<b>1.03</b>	<b>13,453</b>	<b>6,416</b>	<b>1.58</b>	<b>325,876</b>	<b>6,826</b>	<b>1.55</b>	<b>339,329</b>

# Reserve and Resource Notes

OROSUR MINING



1 troy ounce = 31.1035 grams

## General Notes:

Totals may not be exact due to rounding

Mineral Reserves are completely within the stated Mineral Resources with mining factors applied.

Mineral Reserves are in situ as at 31 May, 2011

Mineral Resources are current as at 31 May, 2011

UG Mineral Resources are completely within stated OP Mineral Resources (where relevant)

## Deposit Specific Notes:

Veta A Resource includes 336kt @ 1.94gpt under the operating Tailings Storage Facility

## Qualified Persons (QP) for respective reporting of Mineral Resources and Reserves

Orosur Mining Inc (OMI)

Qualified Person for Mineral Reserves Randall Corbett (P. Eng)

External consultant (Ex OMI employee)

Qualified Person for Mineral Resources Devin den Boer (P. Geo)

## Mine Development Associates (MDA):

Qualified Persons for Mineral Resources and Reserves Steven Ristorcelli (C.P.Geo) and Peter Ronning (P.Eng)

## Golder Associates (Golder):

Qualified Person for Mineral Resources Dr Marcelo Godoy

Qualified Person for Mineral Reserves Juan Pablo Gonzalez