



LATIN AMERICAN FOCUSED GOLD PRODUCTION AND EXPLORATION COMPANY

Corporate Profile

Orosur Mining Inc. (OMI) is a fully integrated gold producer and exploration company focused on identifying and developing gold resources in Latin America. The Company operates the San Gregorio gold mine in Uruguay, is developing the Pantanillo project in the Chilean Maricunga Belt and has assembled an exploration portfolio of high quality assets in Chile and Uruguay.

Key Data

AIM/TSX:	OMI
12 Month Hi/Low:	\$C0.69-C0.20
Share O/S:	64,432,706
Share F/D:	68,973,021
Cash:	US\$7.2 Million
Debt:	Negligible
Market Cap:	C\$26 Million; £16 Million

Investment Highlights

- Mid-cap established gold producer/explorer focused on expansion.
- Focused on extending mine life in Uruguay, lowering costs and accreting value from discoveries on recently acquired projects in Chile.
- Other Uruguayan exploration assets (iron ore/diamonds) under Joint Venture.
- Leverage from production growth, resource expansion and pipeline of exploration projects.



Uruguay- San Gregorio mine producing 55,000 oz pa

Chile- Pantanillo and Anillo gold projects in established gold belts

BOARD OF DIRECTORS

- Mario Caron** P Eng
Non Executive Chairman
- David Fowler** CA
Director and CEO
- Ignacio Salazar** MBA
Director and CFO
- William Lindqvist** PhD
Non Executive Director
- Julio Porteiro** CPA
Non Executive Director
- Roger Davey** CE
Non Executive Director

NOMINATED ADVISERS

Matrix Corporate Capital LLP
One Vine Street, London W1J 0AH - United Kingdom
Tel: + 44 (0) 20 3206 7000
Contacts: Louis Castro / Tim Graham

HEAD OFFICE

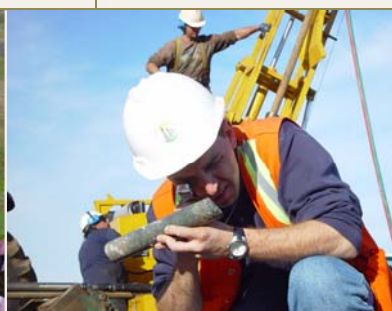
Puntas de Santiago 1604
C.P. 11.500 Montevideo, Uruguay
Tel: + 598-2-601-6354
Fax: + 598-2-600-6232
e-mail: info@orosur.ca

CONTACTS

David Fowler - CEO
david.fowler@orosur.ca
Ignacio Salazar - CFO
ignacio.salazar@orosur.ca
Patricia Rodriguez – Company Secretary
patricia.rodriguez@orosur.ca

PRESS /INVESTOR ENQUIRES

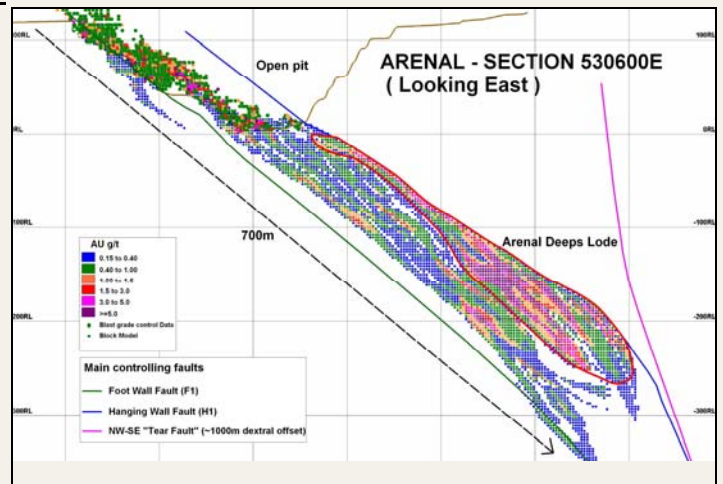
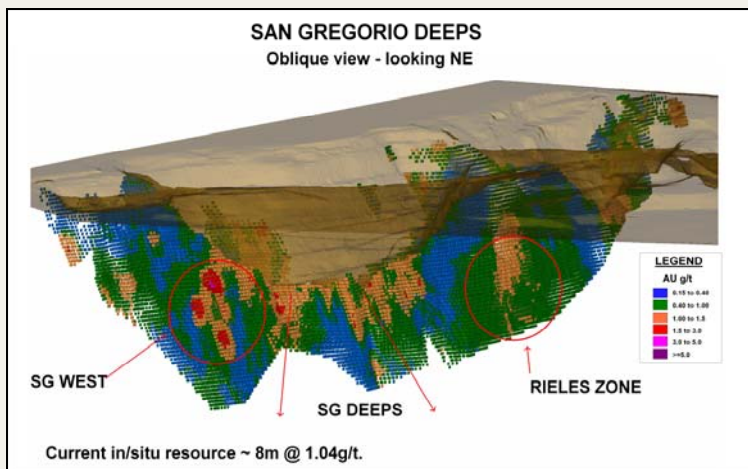
The Sherbourne Group
366 Adelaide St. East
Toronto, Ontario Canada M4K 2V4
Tel: +1 - 416-203-2200
forbes@sherbournegroup.ca
Contact: Forbes West



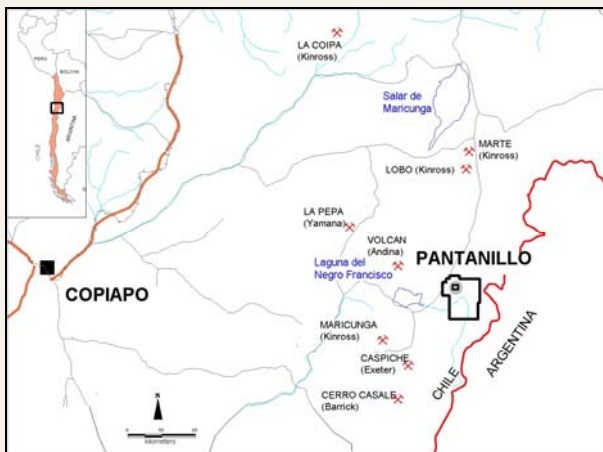
San Gregorio Mine (Northern Uruguay)



- San Gregorio District has produced in excess of 1,000,000 ounces from surface operations
- Three main pits; Arenal, San Gregorio and Santa Teresa have been mined to 200m depth
- Forecast production of + 55,000 ounces for FY2010
- Arenal Deeps M&I Resource of 2.14 Mt @ at 3.61 g/t for 249,000 ounces at a 1.5g/t cutoff; expected to extend mine life, progressively reduce costs and contribute to production in FY 2011 (feasibility study underway – AMEC)
- Drilling underway to define additional underground resources at San Gregorio; focus on higher grade lenses within the existing in situ M&I resource of 8 MT at 1.04 g/t and extensions at depth.
- Near mine exploration programs targeting additional resources

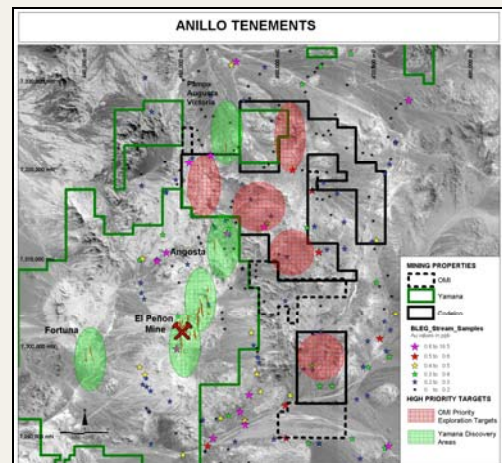


Pantaniillo Project (Maricunga Belt – Chile)



- Option to acquire 100% of the Pantaniillo project from Anglo American in the Maricunga Belt
- >15,000 meters of historical drilling on Pantaniillo Norte has defined a bulk tonnage-low grade gold deposit (Resource estimate of 2m oz Au is not currently NI 43-101 compliant)
- 7,500m Resource Definition Drilling program underway: results include intercepts of 107m @ 1.21 g/t and 118m @ 0.79 g/t
- Focus on oxide and mixed zones
- 43-101 compliant resource estimate anticipated by Y/E 2010
- Scoping study work has commenced with results anticipated by Y/E 2010
- Multiple targets exist on the 11,750 hectare land package.

Anillo Project (El Peñon Gold District – Chile)



- Option to acquire 65% of project from Codelco (world's largest copper company).
- Property comprises 30,600 hectares approximately 10 km north and east of Yamana's El Peñon gold silver mine (current production of >400,000 oz Au eq per annum at \$US 280-310 per oz cash cost).
- Yamana's Pamapa Victoria discovery is 1.5 km from Anillo property.
- Targeting El Peñon Au+Ag style vein mineralization
 - Similar geology - rhyolite domes and veins.
 - Structural features continue north from El Peñon through Anillo
 - Geochemical profile around veins similar
- Mapping underway, soil sampling and drilling planned for 2010/11